

















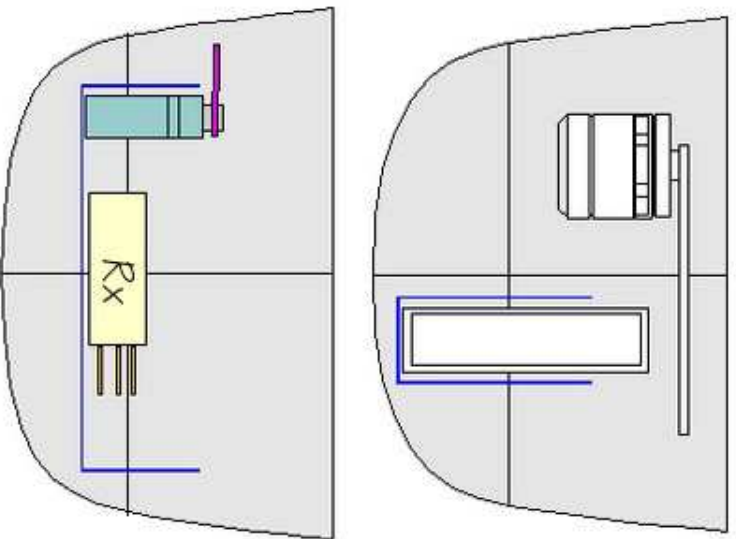






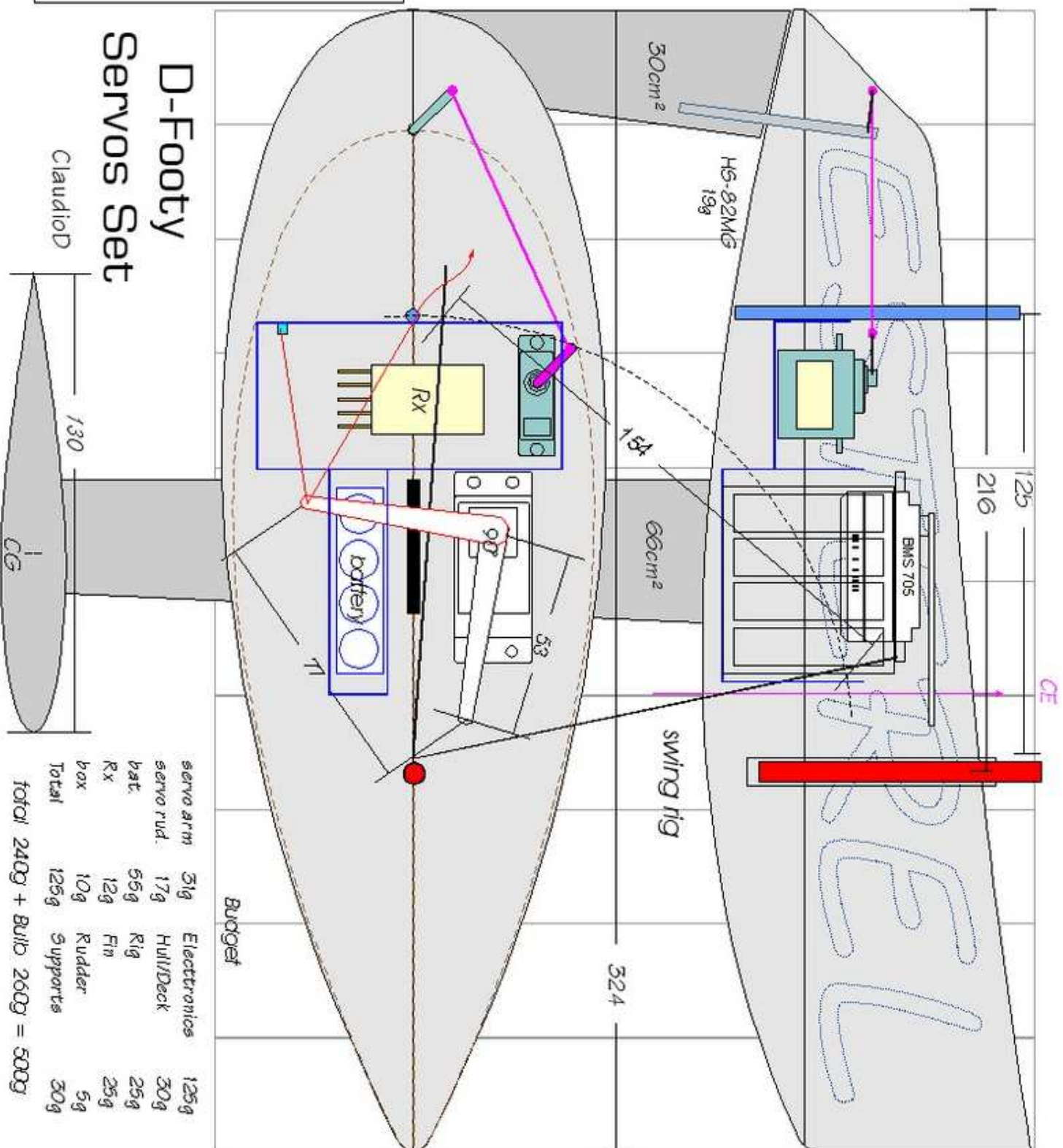
Template





Wind force  $F = 1/2 \rho v^2 A C_d = 1/2 \times 1.29 \times 0.12 \times 1.2 \times 1.2 = 10.58N$   
 $0.5 \times 1.29 \times 0.12 \times 1.2 \times 1.2 = 10.58N$   
 Pressure on sail  $10.58N/981 = 1.08kgf$   
 pull force of boom anchoring =  
 $1.08 \times 20/125 = 0.172kgf$

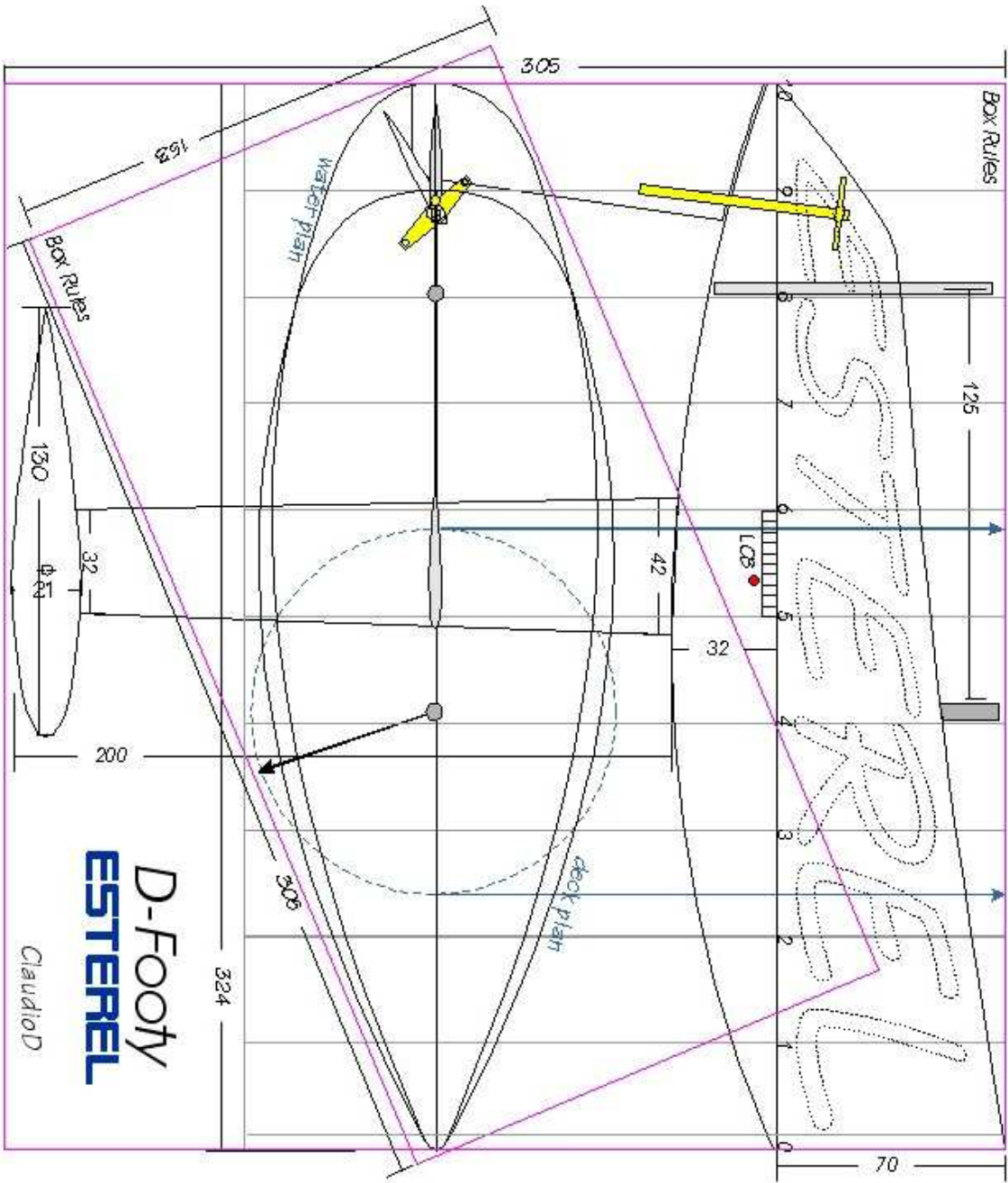
Servo Torque =  
 $0.172 \times 5.3cm \times 2 \text{ safe} = 1.82kgcm$   
 $1.82 \times 2 = 3.64kgcm$  under load  
**BMS-705/136 MG - HS-5085MG**



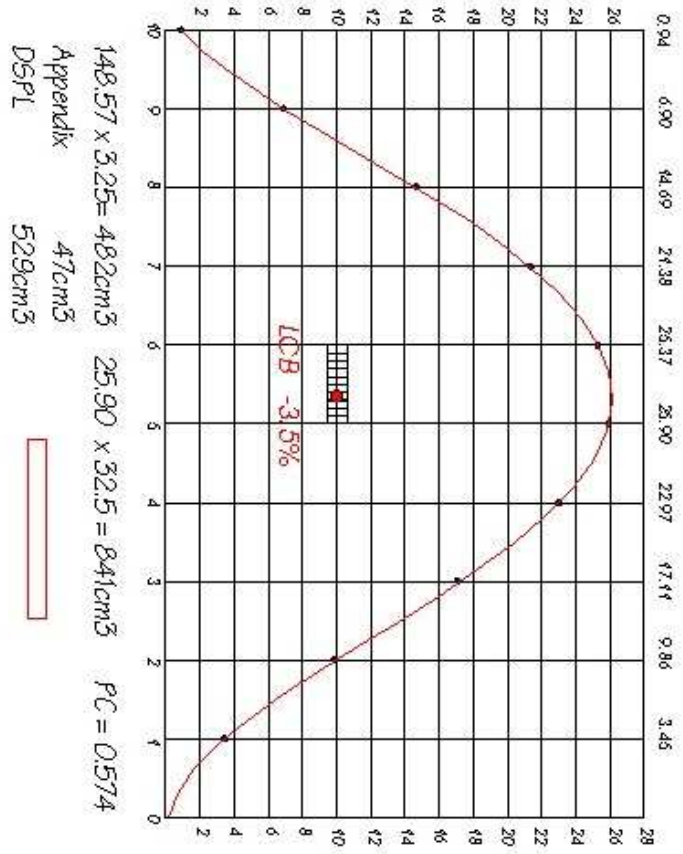
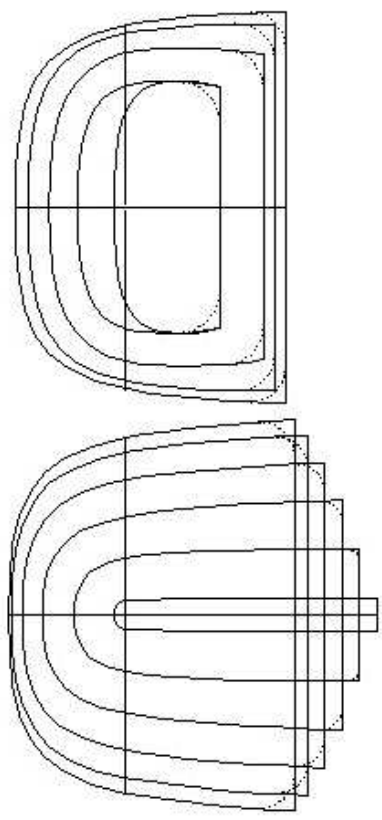
# D-Footy Servo Set

Claudiod

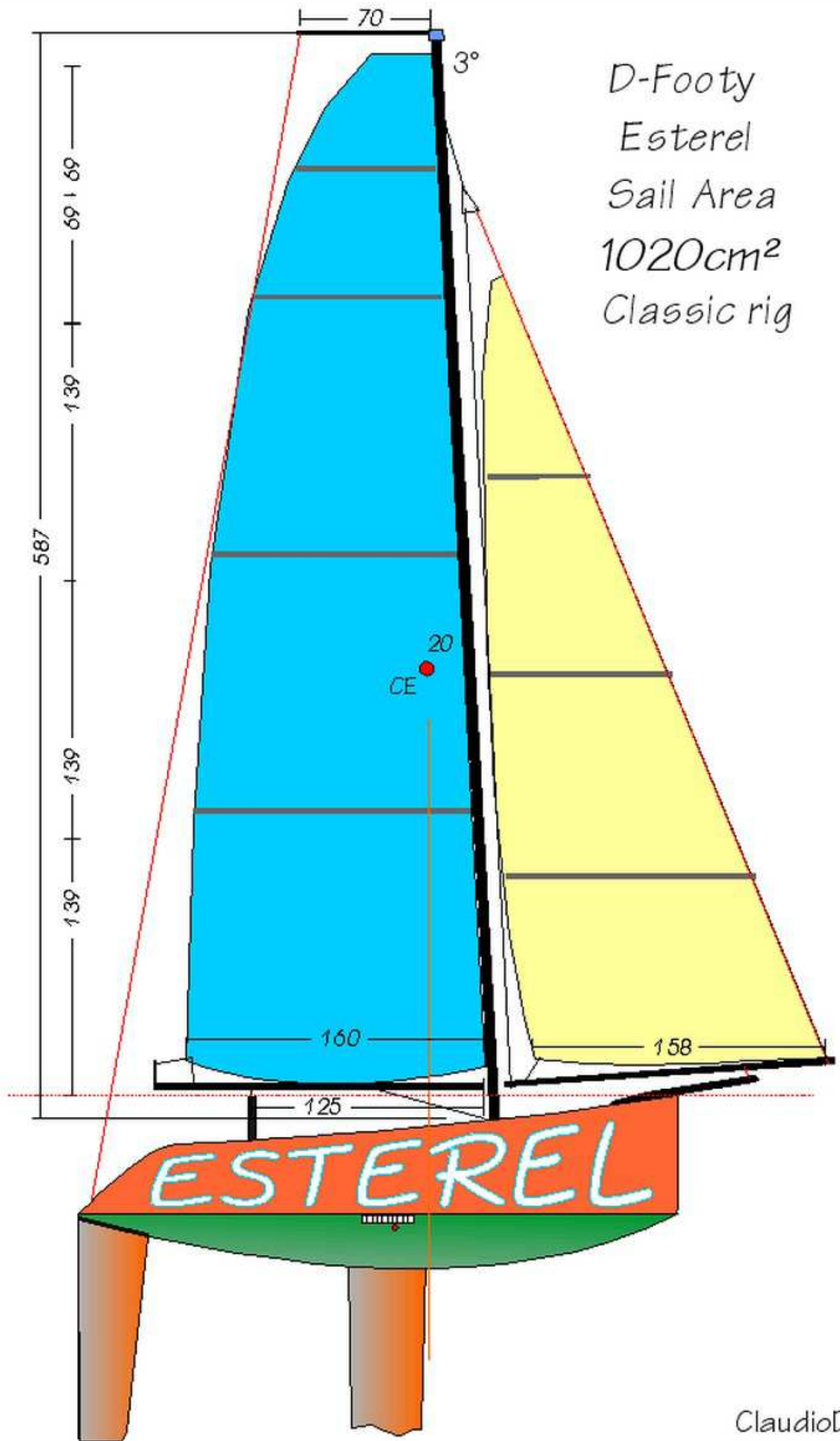
	Budget	Electronics
servo arm	51g	125g
servo rud.	17g	30g
bat.	55g	25g
Rx	12g	25g
box	10g	5g
Total	125g	Supports
total 240g + Build 260g = 500g		



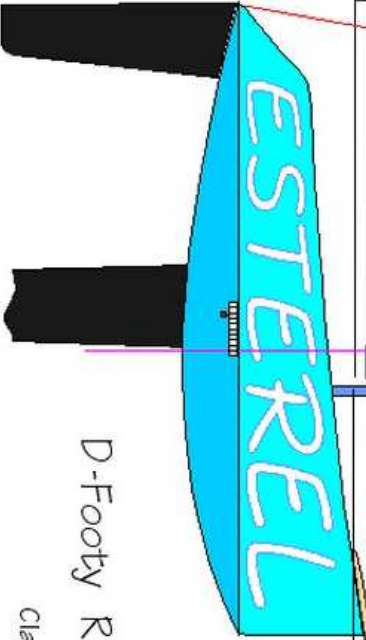
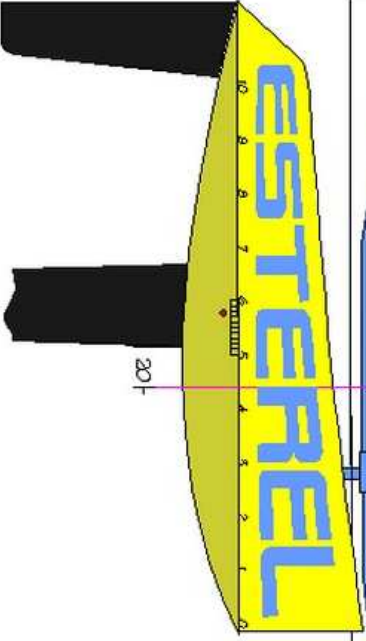
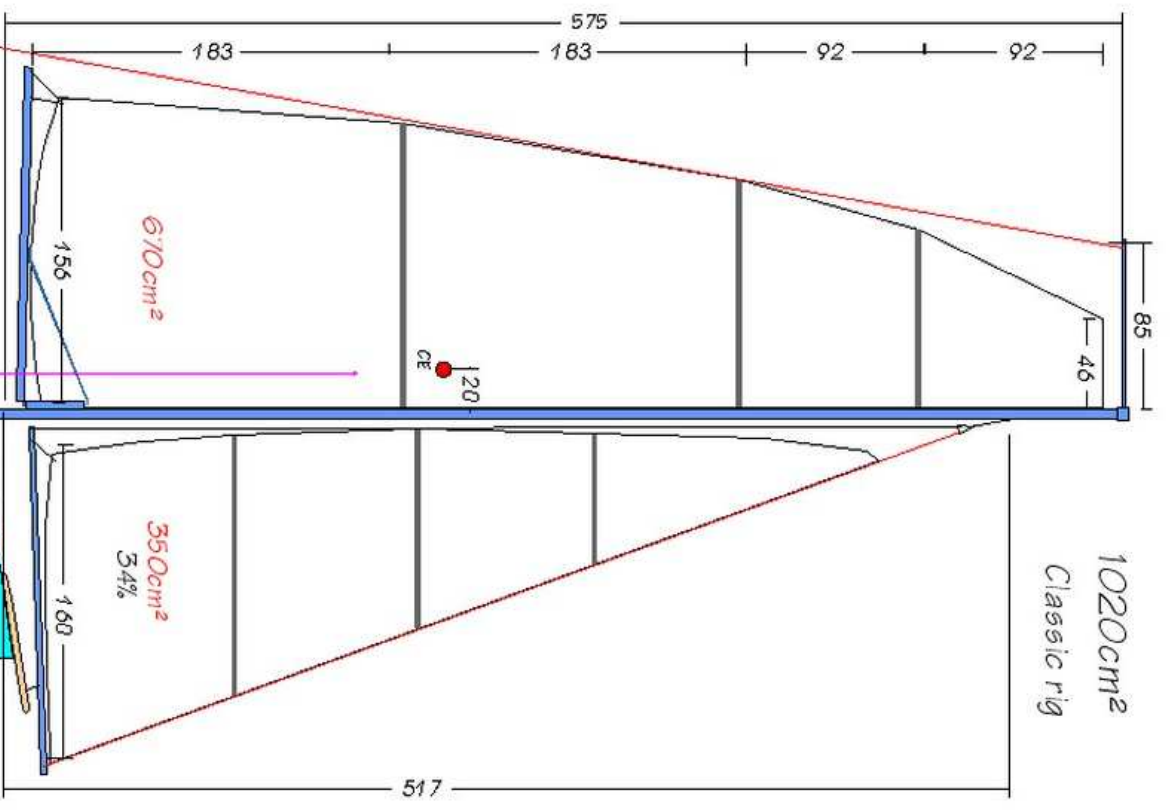
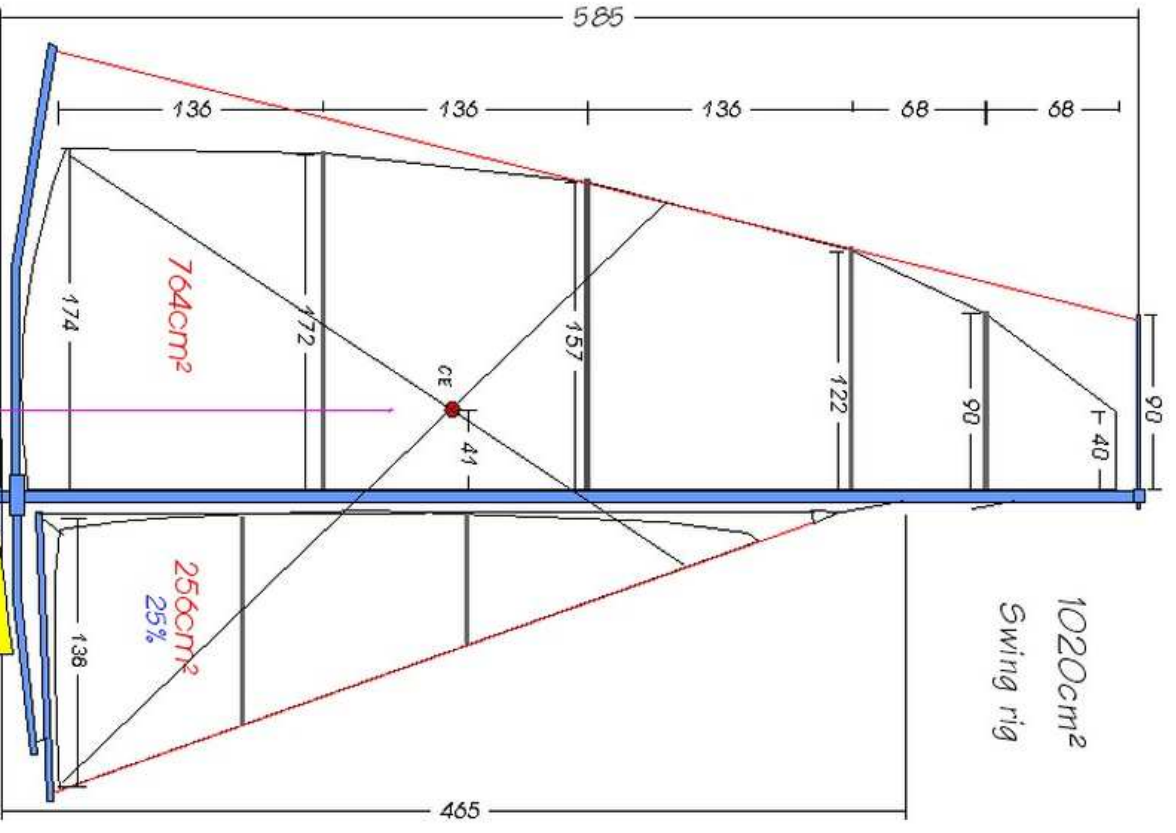
**D-Footy**  
**ESTERREL**  
 Claudiod



148.57 x 3.25 = 482cm<sup>3</sup>    25.90 x 32.5 = 841cm<sup>3</sup>    PC = 0.574  
 Appendix    47cm<sup>3</sup>  
 DSP1    529cm<sup>3</sup>



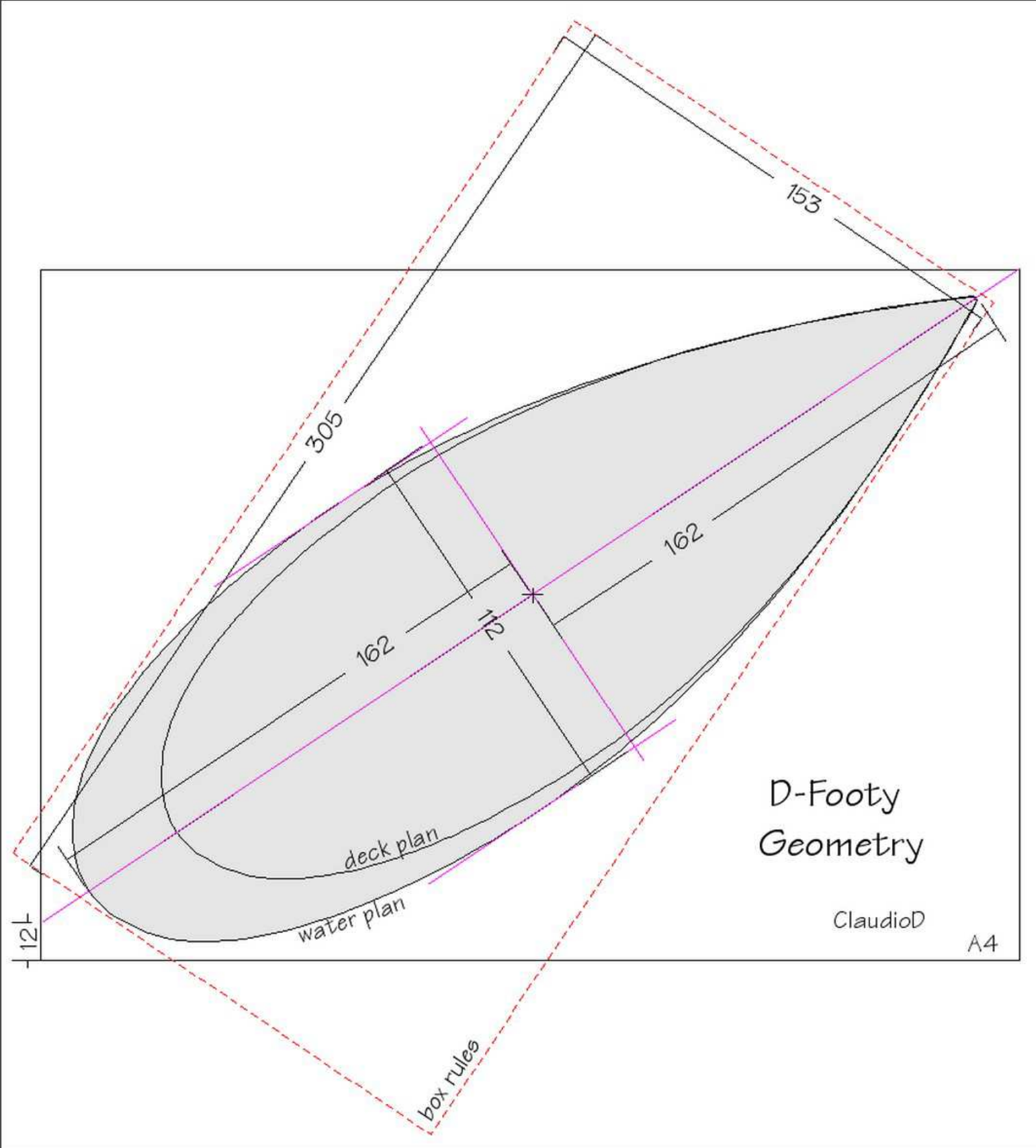
D-Footy  
Esterel  
Sail Area  
1020cm<sup>2</sup>  
Classic rig



D-Footy RIGS

Claudio D



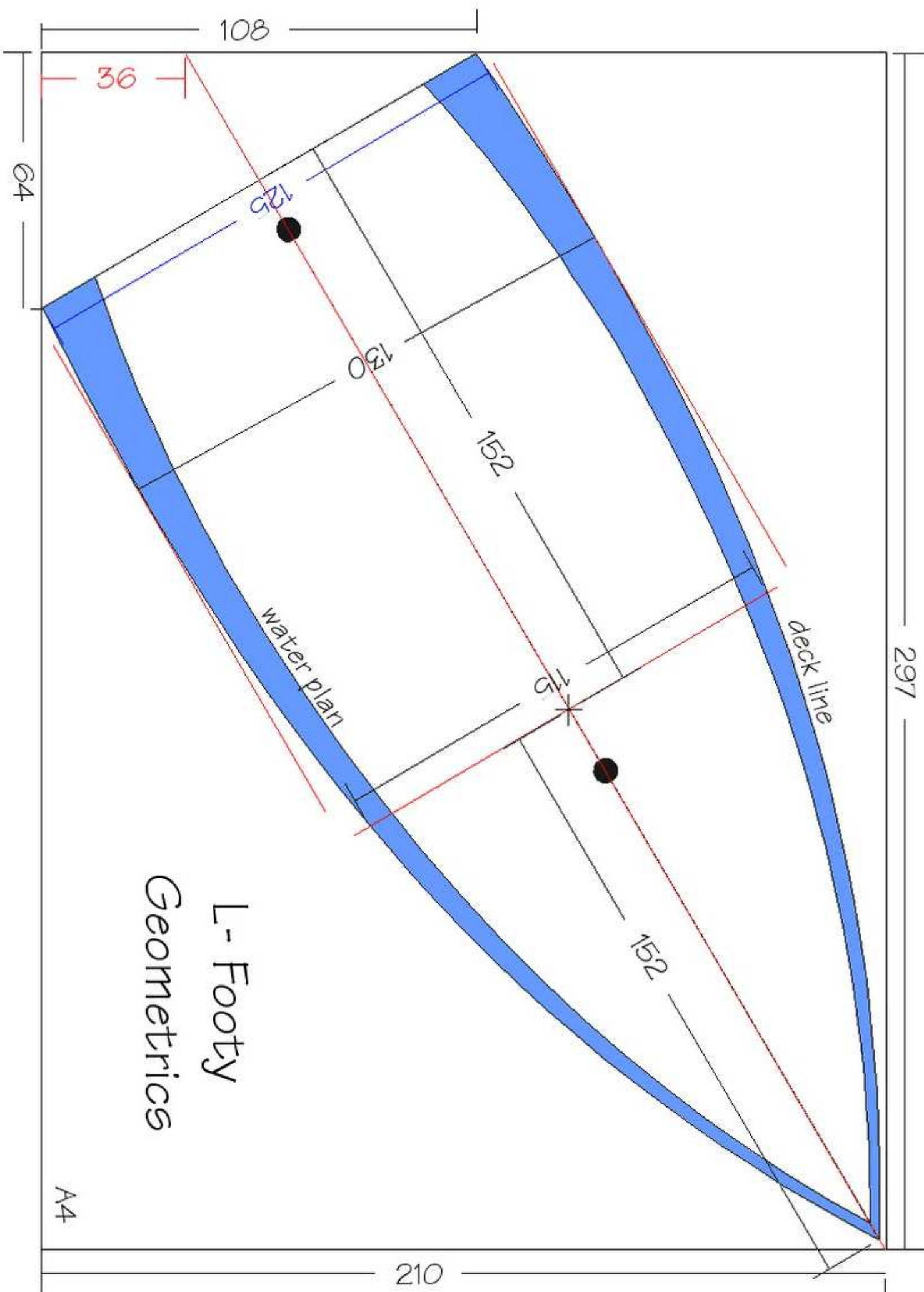


# D-Footy Geometry

ClaudioD

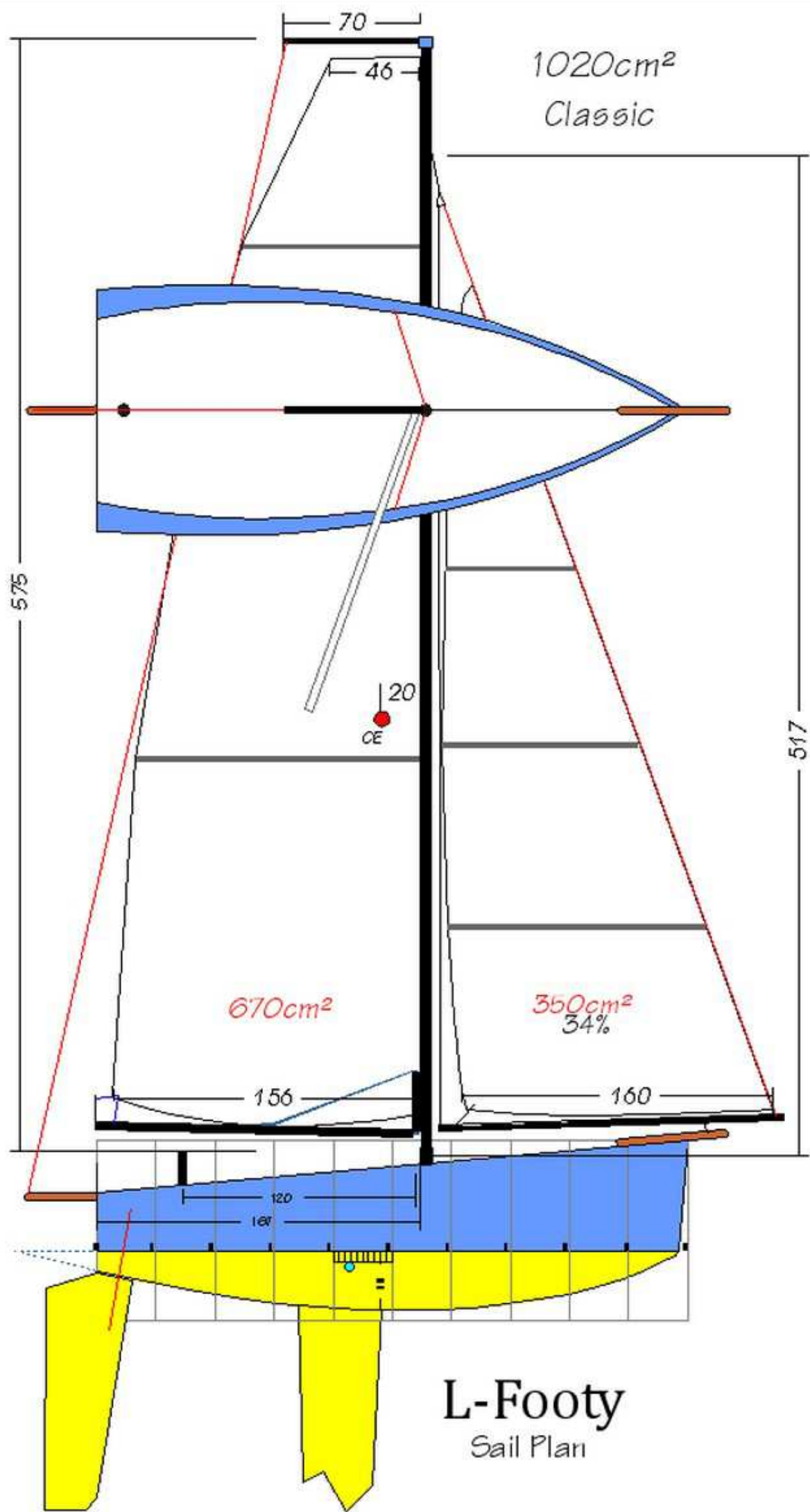
A4

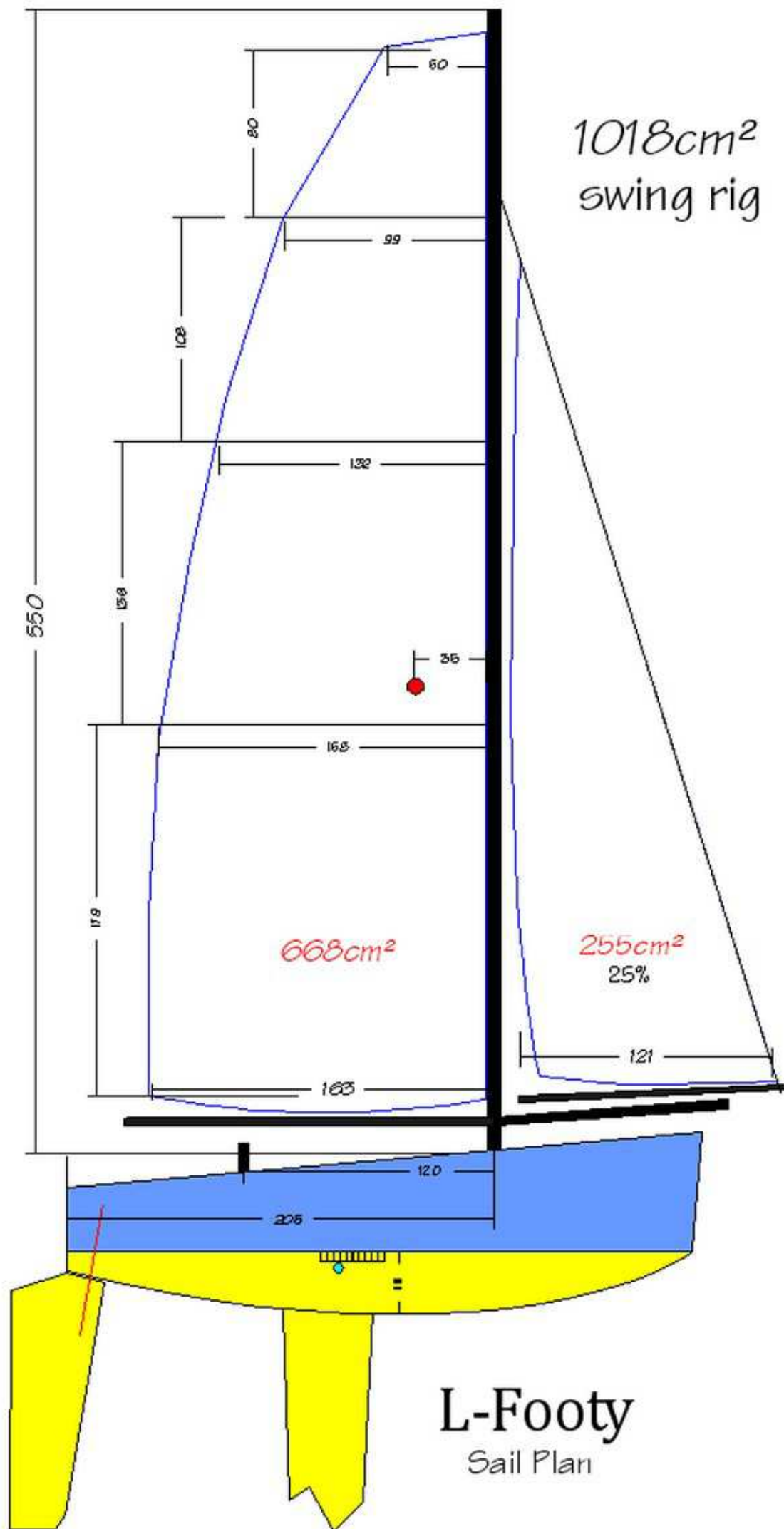




L-Footy  
Geometrics

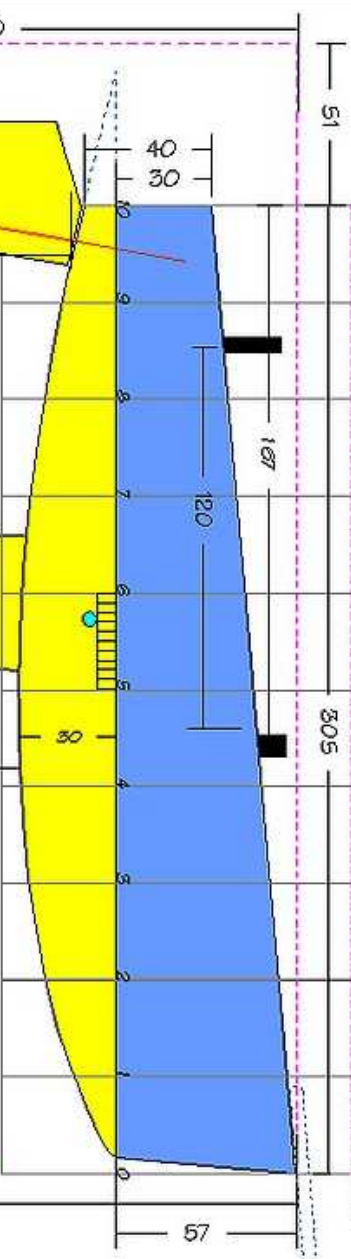
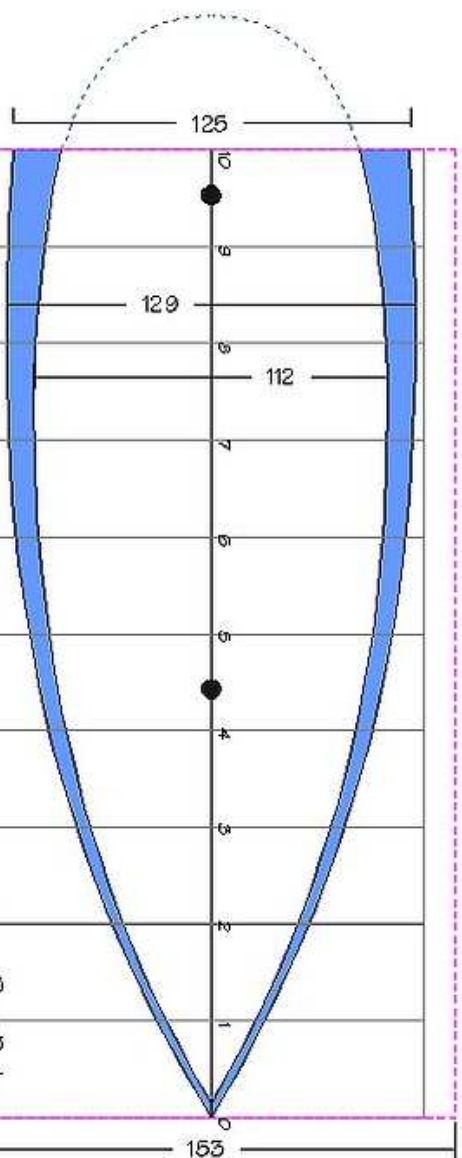
A4





# L-Footy

by Claudio D

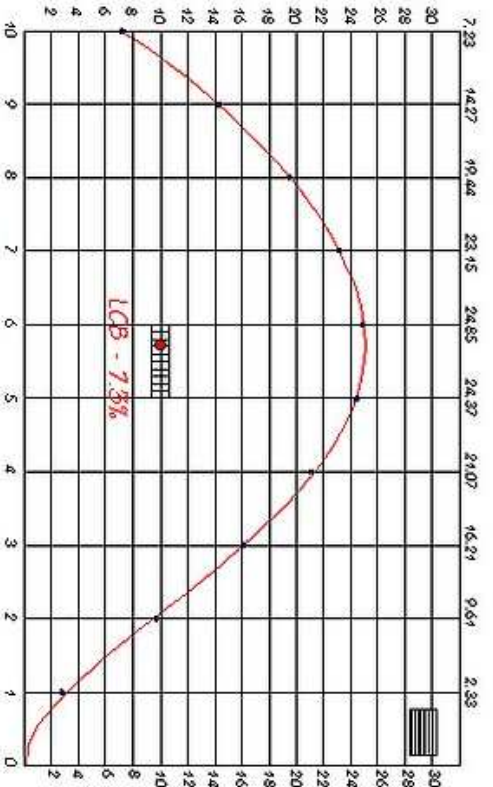
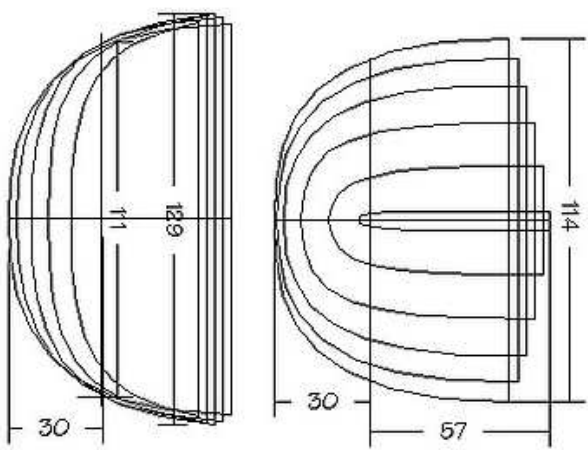
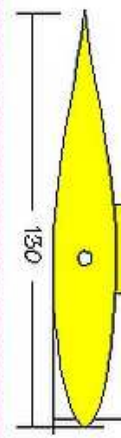


Box Rules

- sail 11 dm<sup>2</sup>
- servo 8g
- winch 40g
- Rx 12g
- bat 90g
- hull 25g
- deck 10g
- supp 25g
- Rig 30g
- tot 240g
- bulb 250g

- 25cm 5 bulb
- 15cm 5 fin
- 7cm 5 rudder
- 47cm 3 append.

$487 \cdot 47 = 440$



$162.53 \times 3.0 = 487 \text{ cm}^2$     $24.85 \times 30.0 = 745 \text{ cm}^2$     $PC = 0.653$

Box Rules